

DAFNI[®]
muse



DAFNI muse: Safety instructions and user manual

To avoid burns, electrocution, fire or injury to persons, read and follow these safety instructions before using your DAFNI brush.

IMPORTANT SAFETY INSTRUCTIONS

The DAFNI brush is for use only as a hairstyler, and it should be used only with products specifically designed for use with a heated hairstyler.

When using electrical appliances, especially when children are present, basic safety precautions should always be taken, including the following:

READ ALL INSTRUCTIONS BEFORE USING

KEEP AWAY FROM CHILDREN

KEEP AWAY FROM WATER

WARNING: Do not use this appliance near bathtubs, showers, basins or other vessels containing water.



DANGER – As with most electrical appliances, electrical parts are electrically live even when the switch is off.

To reduce the risk of death by electric shock:

1. Always unplug the DAFNI brush immediately after using.
2. Do not use while bathing.
3. Do not place or store the appliance where it can fall or be pulled into a bath, basin or sink.
4. Do not reach for the appliance if it has fallen into water.
5. Do not spray or apply wet styling aids directly onto the DAFNI brush.
6. If the appliance falls into water, unplug it immediately.

Warning: electricity

WARNING – To reduce the risk of burns, electrocution, fire, or injury to persons:

1. Only use with AC100-240V, 50-60 Hz power supply.
2. When the appliance is connected to the power supply, never leave

it unattended.

3. For additional protection, the installation of a residual current device (RCD) having a rated residual operating current not exceeding 30 mA is advisable in the electrical circuit supplying the bathroom. Ask your installer for advice.
4. Never operate this appliance if it has a damaged power cord or plug, if it is not working properly or if it has been dropped, damaged, or dropped into water. Return the appliance to an authorized service center for examination and repair.
5. Failure: In the unlikely event of a control system error, the heaters will turn off, the DAFNI brush will emit rapid tones and the LEDs will flash RED continuously. In this case, immediately disconnect from power and contact DAFNI Customer Service at dafnihair.com for advice.
6. Keep the power cord away from heated surfaces.
7. Do not wrap the power cord around the appliance.
8. Do not hang the DAFNI brush by the power cord.
9. Always unplug the DAFNI brush immediately after using.
10. Do not use an extension power cord with this appliance.
11. Do not use a voltage converter or generator with this appliance.
12. Your DAFNI product is a class II electrical appliance and should not be connected to a grounded connection.
13. Before plugging in, read the information about dual voltage contained in the Operating Instruction section of this manual.

Warning: hot surfaces

The DAFNI brush heater is hot for effective styling. To reduce the risk of burns:

1. Burn hazard. Keep appliance out of reach of young children, particularly during use and cool down.
2. Always place the appliance on a heat-resistant stable flat surface, using its stand if it has one.
3. NEVER touch the ceramic hot surface.
4. When not styling, always place the DAFNI brush on a flat heat-resistant surface.
5. When styling is complete, always switch off the DAFNI brush and unplug it from the power supply.
6. Wait for the DAFNI brush to cool before storing.
7. After styling, the ceramic surface will remain hot and should be left to cool inaccessible by children.
8. Close supervision is necessary when this appliance is used by, on, or near children or individuals with certain disabilities.
9. Use this appliance only for its intended use as described in this manual. Do not use attachments not recommended by the manufacturer.
10. Never use while sleeping.
11. Never drop or insert any object into any opening.
12. Do not use outdoors or operate where aerosol (spray) products are being used or where oxygen is being administered.
13. For household use only.
14. This appliance is not intended for use by persons (including children) with reduced physical, sensory, or mental capabilities, or lack of experience and knowledge, unless they have been given supervision or instruction concerning use of the appliance by a person responsible for their safety.

15. Children should be supervised to ensure that they do not play with the appliance.

SAVE THESE INSTRUCTIONS

SERVICING OF DOUBLE-INSULATED APPLIANCES

In a double-insulated appliance, two systems of insulation are provided instead of grounding. No grounding means is provided on a double-insulated appliance, nor should a means for grounding be added to the appliance. Servicing a double-insulated appliance requires extreme care and knowledge of the system, and should be done only by qualified service personnel. Replacement parts for a double-insulated appliance must be identical to the parts they replace. A double-insulated appliance is marked with the words "DOUBLE INSULATION" or "DOUBLE INSULATED". The square within a square symbol, "□" may also be marked on the appliance.

USER MAINTENANCE INSTRUCTIONS

Cleaning your DAFNI brush:

1. Unplug the DAFNI brush from the power supply.
2. Always allow the DAFNI brush to cool before attempting to clean it.
3. Never immerse the appliance in water.
4. Wipe the outside of the DAFNI brush with a damp cloth.
5. Do not use sharp or abrasive detergents or corrosive products.

Storage:

1. Always allow the DAFNI brush to cool down before storing away.
2. When the DAFNI brush has cooled down, fold the power cord in the same way as it was first delivered in its packaging. Do not wrap the supply cord around the DAFNI

brush, as this can strain the cord and cause premature supply cord failure.

Any servicing should be performed by an authorized service representative.

Failure to operate:

This DAFNI styling appliance is a high-performance product, and if the unit is subjected to a large fluctuation in power during use, it may go into fail-safe mode to protect the unit from damage. Therefore, in the unlikely event that your DAFNI product does not operate correctly, check that your DAFNI product and power supply are switched on, and that power is available.

If DAFNI brush emits rapid tones and the lights flash RED continuously, immediately disconnect the power and contact Conair Customer Service for advice at conair.com. If in doubt or for further advice, please contact Conair Customer Service for further advice.

Handling your DAFNI brush:

1. Do not insert foreign objects into your DAFNI brush.
2. Do not paint your DAFNI brush.
3. Do not disassemble your DAFNI brush.
4. Do not use your DAFNI brush if it has been damaged.
5. Do not drop your DAFNI brush.
6. If your product is damaged through misuse or abuse, this will not be covered under your guarantee. This does not affect your statutory rights.
7. The DAFNI brush is not intended for use by children under 16 years old, persons with reduced physical, sensory or mental capabilities, or persons with lack of experience and knowledge, unless they have been given supervision or instruction concerning the use of the appliance in a safe way by a

person responsible for their safety and understands the hazards involved.

8. Cleaning and user maintenance should not be undertaken by children unless supervised.
9. Children should be supervised to ensure that they do not play with this appliance.
10. DAFNI brush should be used on dry hair only.
11. The DAFNI brush is NOT suitable for use with synthetic hair or synthetic wigs.

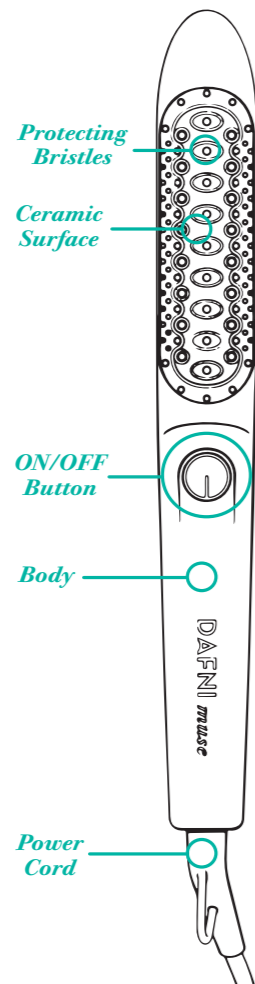
MANUFACTURER'S GUARANTEE

All DAFNI/Conair electrical products are individually tested before leaving the factory. However, in the unlikely event of the product proving defective due to faulty workmanship or materials, then, at its sole discretion, Conair will repair or replace the product with an identical or equivalent product within the warranty period at no charge. A replacement product assumes the remaining guarantee of the original product. When a product is exchanged, any replacement item becomes your property and the replaced item becomes property of DAFNI/Conair. To claim this guarantee, please contact the authorized DAFNI/Conair retailer from which you purchased your DAFNI/Conair appliance. Ensure that you include a proof of purchase with any returned product. Therefore, be sure to keep your proof of purchase in a safe place. This guarantee only applies to genuine DAFNI/Conair products purchased through DAFNI/Conair-approved retailers and does not cover products repaired or serviced by anyone other than DAFNI/Conair personnel or DAFNI/Conair representatives.

Note that this guarantee may be invalidated when serial numbers or identification has been erased, damaged or modified. This does not affect your statutory rights. You are entitled to a replacement or refund for a major failure and for compensation for any other reasonably foreseeable loss or damage. You are also entitled to have the goods repaired or replaced if the goods fail to be of acceptable quality and the failure does not amount to a major failure.

Recycling and disposal:

Your DAFNI electrical product is classified as "electrical or electronic equipment" and must not be disposed of with other household or commercial waste at the end of its working life. When you have no further use for your DAFNI product, please dispose of it according to your local authority's recycling procedure. For more information, contact your local authority or the retailer from which you purchased this product.



OPERATING INSTRUCTIONS

DAFNI muse was designed for optimal styling based on its narrow and cylindrical structure. It is mainly suitable for short-to-medium hair.

DUAL VOLTAGE: This appliance will automatically adjust the proper voltage. Use an adapter plug with correct configuration prior to use in inlet.

Instructions:

1. Make sure that your hair is completely dry before using the DAFNI brush.

2. Plug the power cord into the power supply. The DAFNI brush will play a single short tone and a single short light will come on indicating that it is now connected to the power supply. DAFNI is now in standby mode. In standby mode, if not in use for a long time, DAFNI will remind you to disconnect it from the power with a single short light every two minutes.
3. To turn on DAFNI, press the ON/OFF button once. The DAFNI brush will produce a single short tone followed by a continuous short light every second to indicate that it is now heating up—please note that it is not yet ready to use.
4. When DAFNI reaches its operating temperature, it will play a single short tone and a white light will then illuminate continuously. DAFNI is now ready for use. During use, DAFNI may play a single short tone informing that the temperature is lower than optimal. In this case, it is recommended to brush more slowly so that the hair gets the right temperature for optimal results.
5. When you finish your styling session, press and hold the ON/OFF button until DAFNI brush turns off. When turned off it will play a single short tone and the light will turn off. Disconnect from power when not in use. **WARNING:** DAFNI brush heater ceramic surface is very hot. Do not touch the ceramic surface or allow children or those with reduced physical, sensory or mental capabilities or lack of experience and knowledge to touch DAFNI brush while it is cooling.
6. Failure: If the DAFNI brush detects a failure, it immediately emits rapid tones and flashes RED continuously. Immediately disconnect from power and contact Conair Customer Service

for advice.

7. DAFNI will automatically shut down 60 minutes after turning on or if not in use for 10 minutes.

Safety features:

1. This appliance has a polarized plug (one blade is wider than the other). As a safety feature, this plug will fit in a polarized outlet only one way. If the plug does not fit fully in the outlet, reverse the plug. If it still does not fit, contact a qualified electrician. Do not attempt to defeat this safety feature
2. Auto shutoff: DAFNI will shut off 60 minutes after it has been turned on or if it has been left unused for more than 10 minutes. In these two cases, it will automatically go into standby mode, and DAFNI heating surface will then start to cool. The DAFNI lights will turn off at the same time followed by a single short tone. Note that although the DAFNI brush is turned off, it is still connected to power and should be unplugged from electricity. If left connected to power, a short white wave will show every two minutes as a reminder to unplug from electricity.
3. Failure mode: In the unlikely event of a control system error detection, the heaters will turn off, the DAFNI brush will emit rapid tones and the lights will flash RED continuously. In this case, immediately disconnect the power and contact Conair Customer Service for advice.

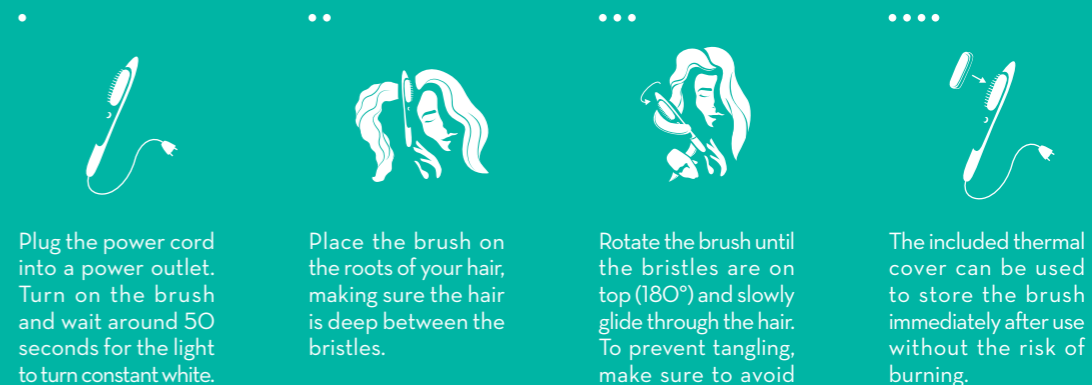
DAFNI® muse is an innovative hair styling brush that incorporates the most advanced hair care technologies, ensuring safe, easy and quick results time after time. It utilizes top-quality ceramic coating and springy bristles to protect your scalp.

DAFNI® is the smartest and easiest way to look great in minutes.

Choose **DAFNI®** and look beautiful every day.

From smoothed to styled in simple brush strokes.

Create beachy waves with muse:



Plug the power cord into a power outlet. Turn on the brush and wait around 50 seconds for the light to turn constant white.

Place the brush on the roots of your hair, making sure the hair is deep between the bristles.

Rotate the brush until the bristles are on top (180°) and slowly glide through the hair. To prevent tangling, make sure to avoid rolling the hair more than two times.

The included thermal cover can be used to store the brush immediately after use without the risk of burning.



Learn how to create various hairstyles with DAFNI muse through the QR code:

